

Concert C, My _____

Concert G, My _____

Concert D, My _____

Concert Db, My _____

Knucklebusters-Volume 1

Oboe

Concert Bb, My _____

Two staves of musical notation for Concert Bb, My _____. The first staff contains four measures of music in 4/4 time, featuring eighth-note patterns with slurs. The second staff contains four measures of music, also in 4/4 time, with eighth-note patterns and slurs, ending with a double bar line.

Concert Eb, My _____

Two staves of musical notation for Concert Eb, My _____. The first staff contains four measures of music in 4/4 time, with eighth-note patterns and slurs. The second staff contains four measures of music in 4/4 time, with eighth-note patterns and slurs, ending with a double bar line.

Concert F, My _____

Two staves of musical notation for Concert F, My _____. The first staff contains four measures of music in 4/4 time, with eighth-note patterns and slurs. The second staff contains four measures of music in 4/4 time, with eighth-note patterns and slurs, ending with a double bar line.

Concert Ab, My _____

Two staves of musical notation for Concert Ab, My _____. The first staff contains four measures of music in 4/4 time, with eighth-note patterns and slurs. The second staff contains four measures of music in 4/4 time, with eighth-note patterns and slurs, ending with a double bar line.

Concert C, My _____

Two staves of musical notation for Concert C, My _____. The first staff begins with a treble clef, a 4/4 time signature, and a key signature of one sharp (F#). The melody consists of eighth and quarter notes. The second staff continues the melody with similar rhythmic patterns, ending with a double bar line.

Concert G, My _____

Two staves of musical notation for Concert G, My _____. The first staff begins with a treble clef, a 4/4 time signature, and a key signature of two sharps (F# and C#). The melody features eighth and quarter notes. The second staff continues the melody, including a dynamic marking 'v' (vibrato) and ending with a double bar line.

Concert D, My _____

Two staves of musical notation for Concert D, My _____. The first staff begins with a treble clef, a 4/4 time signature, and a key signature of two sharps (F# and C#). The melody includes eighth and quarter notes with slurs. The second staff continues the melody, ending with a double bar line.

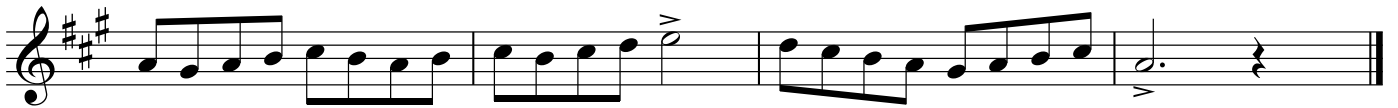
Concert Db, My _____

Two staves of musical notation for Concert Db, My _____. The first staff begins with a treble clef, a 4/4 time signature, and a key signature of three flats (Bb, Eb, and Ab). The melody consists of eighth and quarter notes. The second staff continues the melody, ending with a double bar line.

Concert C, My _____



Concert G, My _____



Concert D, My _____



Concert Db, My _____



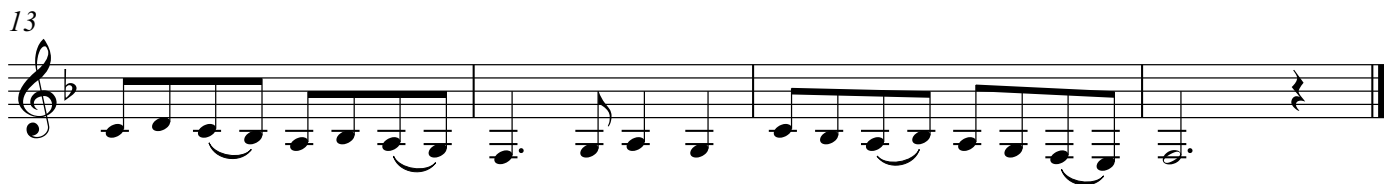
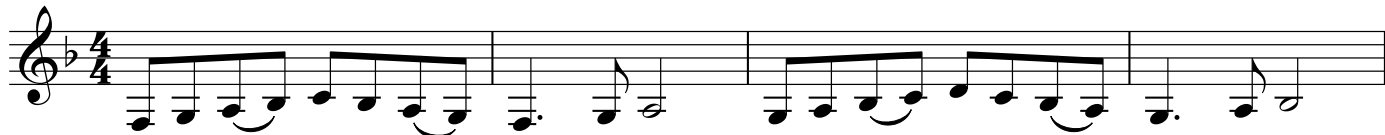
Knucklebusters-Volume 1

Bass Clarinet

Concert Bb, My _____



9 Concert Eb, My _____



17 Concert F, My _____



25 Concert Ab, My _____



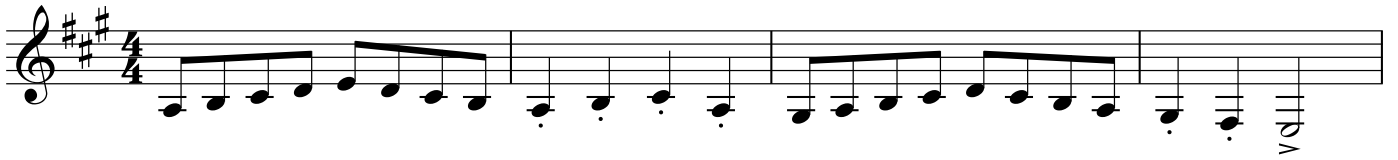
33 Concert C, My _____



37



41 Concert G, My _____



45



49 Concert D, My _____



53



57 Concert Db, My _____



61



Knucklebusters-Volume 1

Alto Sax

Concert Bb, My _____



Concert Eb, My _____



Concert F, My _____



Concert Ab, My _____



Concert C, My _____

Musical staff for Concert C, My _____. The staff is in treble clef, key of C major (no sharps or flats), and 4/4 time. It contains a sequence of eighth and quarter notes, ending with a half note.

Musical staff for Concert C continuation. It continues the melodic line from the previous staff with eighth and quarter notes, ending with a half note.

Concert G, My _____

Musical staff for Concert G, My _____. The staff is in treble clef, key of G major (one sharp, F#), and 4/4 time. It contains a sequence of eighth and quarter notes, ending with a half note.

Musical staff for Concert G continuation. It continues the melodic line with eighth and quarter notes, ending with a half note and a fermata.

Concert D, My _____

Musical staff for Concert D, My _____. The staff is in treble clef, key of D major (two sharps, F# and C#), and 4/4 time. It contains a sequence of eighth and quarter notes, ending with a half note.

Musical staff for Concert D continuation. It continues the melodic line with eighth and quarter notes, ending with a half note and a fermata.

Concert Db, My _____

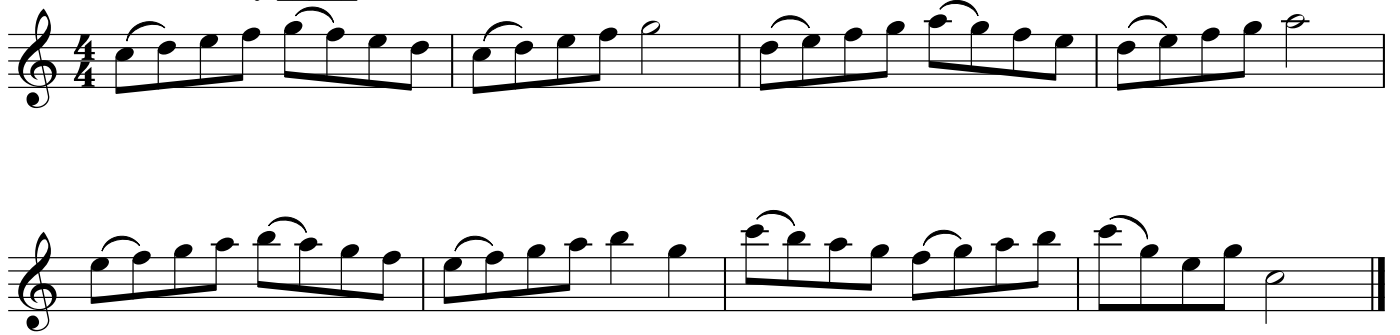
Musical staff for Concert Db, My _____. The staff is in treble clef, key of D minor (two flats, Bb and F), and 4/4 time. It contains a sequence of eighth and quarter notes, ending with a half note.

Musical staff for Concert Db continuation. It continues the melodic line with eighth and quarter notes, ending with a half note.

Knucklebusters-Volume 1

Tenor Sax

Concert Bb, My _____



Two staves of musical notation for the Concert Bb, My section. The first staff begins with a treble clef, a 4/4 time signature, and a key signature of two flats (Bb). The melody consists of eighth and quarter notes with slurs. The second staff continues the melody and ends with a double bar line.

Concert Eb, My _____



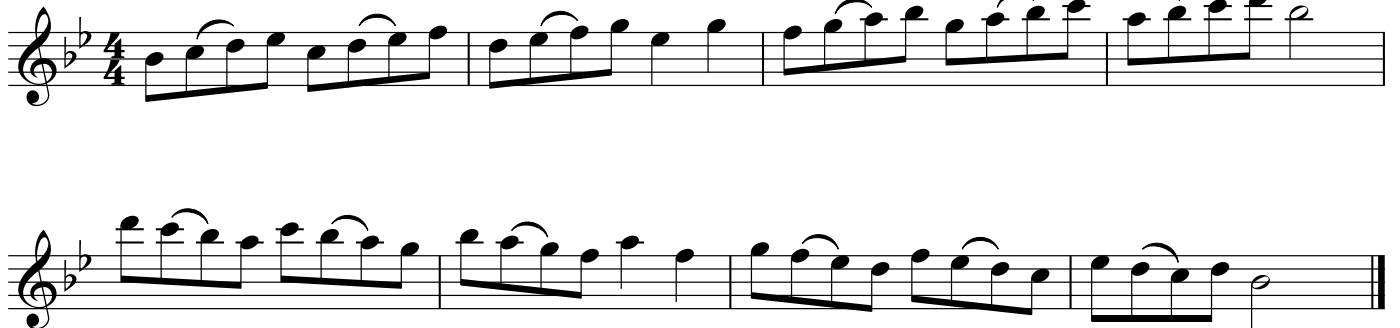
Two staves of musical notation for the Concert Eb, My section. The first staff begins with a treble clef, a 4/4 time signature, and a key signature of three flats (Eb). The melody consists of quarter and eighth notes with slurs. The second staff continues the melody and ends with a double bar line.

Concert F, My _____



Two staves of musical notation for the Concert F, My section. The first staff begins with a treble clef, a 4/4 time signature, and a key signature of one sharp (F). The melody consists of eighth and quarter notes with slurs. The second staff continues the melody and ends with a double bar line.

Concert Ab, My _____



Two staves of musical notation for the Concert Ab, My section. The first staff begins with a treble clef, a 4/4 time signature, and a key signature of three flats (Ab). The melody consists of eighth and quarter notes with slurs. The second staff continues the melody and ends with a double bar line.

Concert C, My _____

Musical staff for Concert C, My _____. The staff is in treble clef, key of C major (no sharps or flats), and 4/4 time. It contains a sequence of eighth and quarter notes, starting with a quarter rest in the first measure.

Continuation of the musical staff for Concert C, My _____. It continues the sequence of eighth and quarter notes from the previous staff.

Concert G, My _____

Musical staff for Concert G, My _____. The staff is in treble clef, key of G major (one sharp, F#), and 4/4 time. It contains a sequence of eighth and quarter notes, starting with a quarter rest in the first measure.

Continuation of the musical staff for Concert G, My _____. It continues the sequence of eighth and quarter notes from the previous staff.

Concert D, My _____

Musical staff for Concert D, My _____. The staff is in treble clef, key of D major (two sharps, F# and C#), and 4/4 time. It contains a sequence of eighth and quarter notes, starting with a quarter rest in the first measure.

Continuation of the musical staff for Concert D, My _____. It continues the sequence of eighth and quarter notes from the previous staff.

Concert Db, My _____

Musical staff for Concert Db, My _____. The staff is in treble clef, key of D minor (two flats, Bb and Fb), and 4/4 time. It contains a sequence of eighth and quarter notes, starting with a quarter rest in the first measure.

Continuation of the musical staff for Concert Db, My _____. It continues the sequence of eighth and quarter notes from the previous staff.

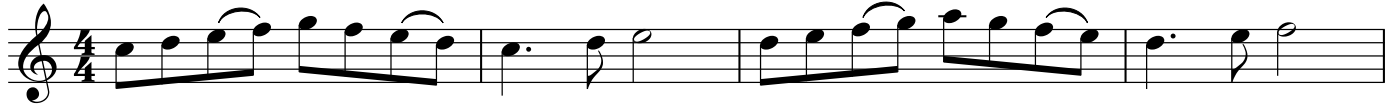
Knucklebusters-Volume 1

Baritone Sax

Concert Bb, My _____



Concert Eb, My _____



Concert F, My _____



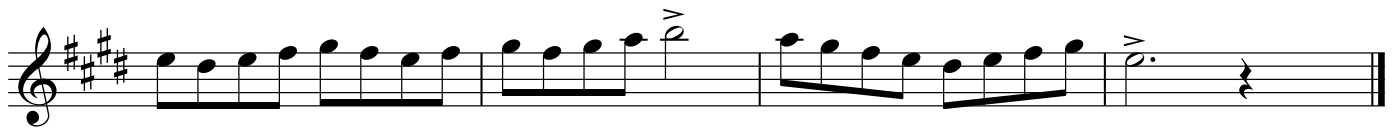
Concert Ab, My _____



Concert C, My _____



Concert G, My _____



Concert D, My _____



Concert Db, My _____



Knucklebusters-Volume 1

Horn

Concert Bb, My _____



Concert Eb, My _____



Concert F, My _____



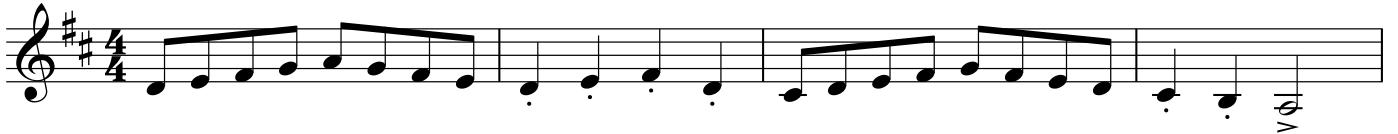
Concert Ab, My _____



Concert C, My _____



Concert G, My _____



Concert D, My _____



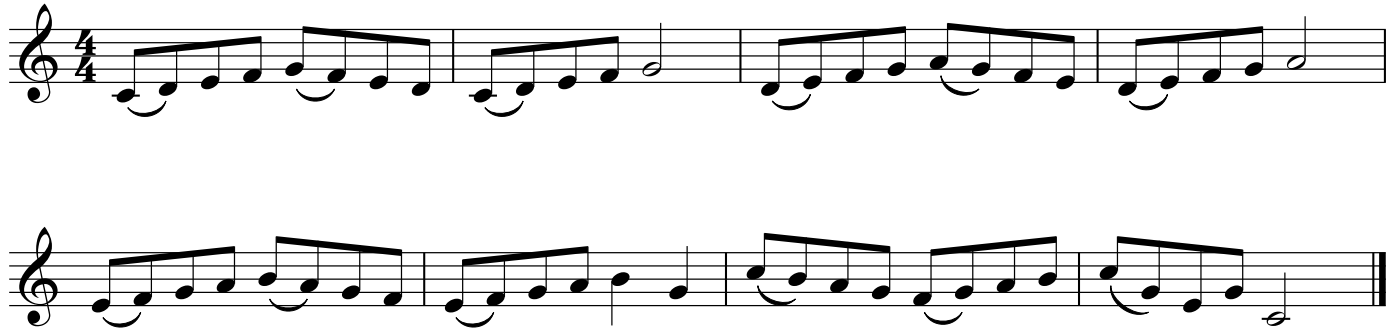
Concert Db, My _____



Knucklebusters-Volume 1

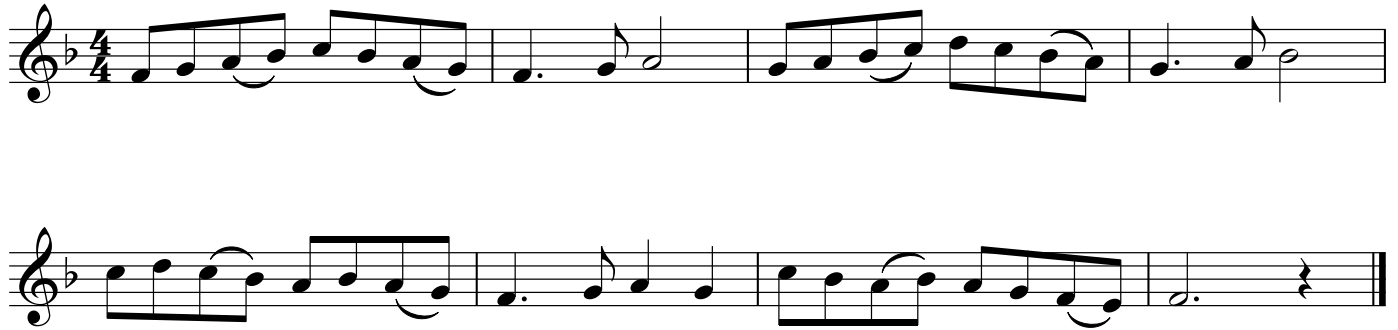
Trumpet

Concert Bb, My _____



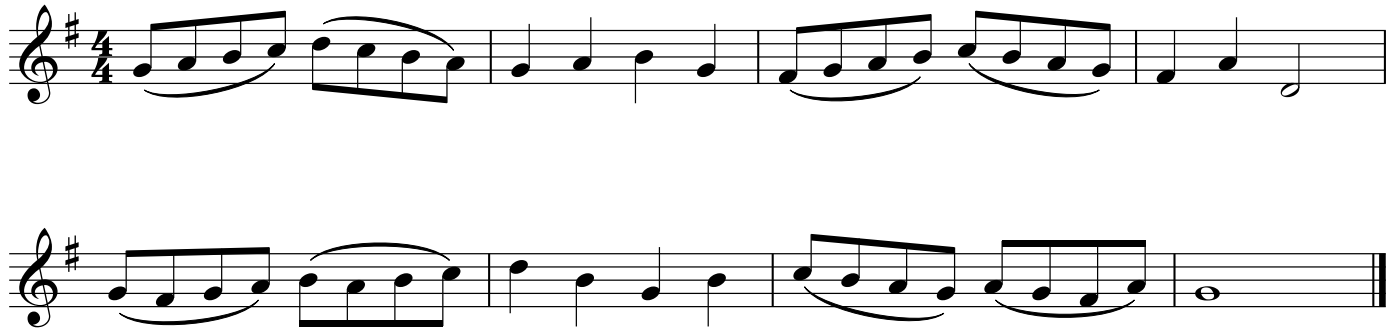
Two staves of musical notation for the Concert Bb, My section. The first staff begins with a treble clef, a 4/4 time signature, and a key signature of two flats (Bb). The melody consists of eighth and quarter notes with slurs. The second staff continues the melody, ending with a double bar line.

Concert Eb, My _____



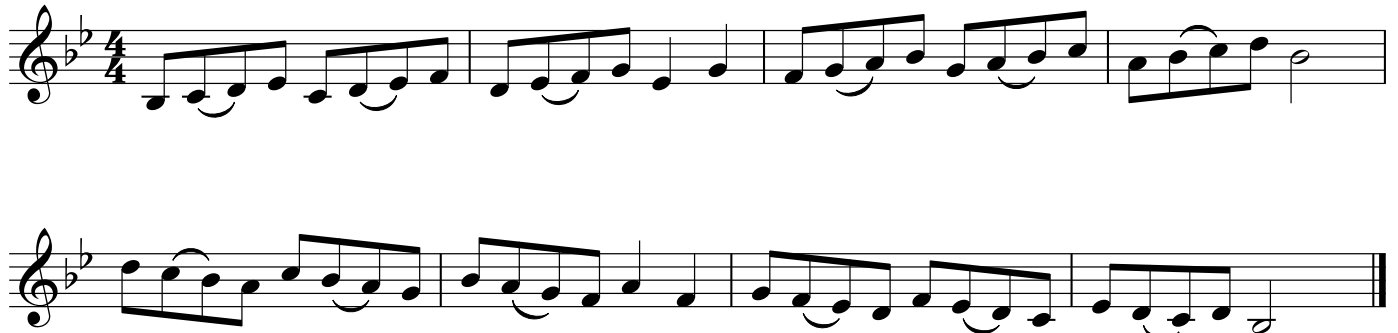
Two staves of musical notation for the Concert Eb, My section. The first staff begins with a treble clef, a 4/4 time signature, and a key signature of three flats (Eb). The melody consists of eighth and quarter notes with slurs. The second staff continues the melody, ending with a double bar line.

Concert F, My _____



Two staves of musical notation for the Concert F, My section. The first staff begins with a treble clef, a 4/4 time signature, and a key signature of one sharp (F). The melody consists of eighth and quarter notes with slurs. The second staff continues the melody, ending with a double bar line.

Concert Ab, My _____

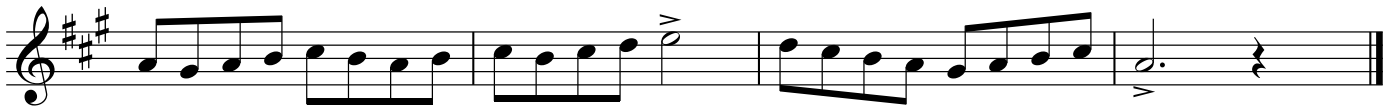


Two staves of musical notation for the Concert Ab, My section. The first staff begins with a treble clef, a 4/4 time signature, and a key signature of three flats (Ab). The melody consists of eighth and quarter notes with slurs. The second staff continues the melody, ending with a double bar line.

Concert C, My _____



Concert G, My _____



Concert D, My _____



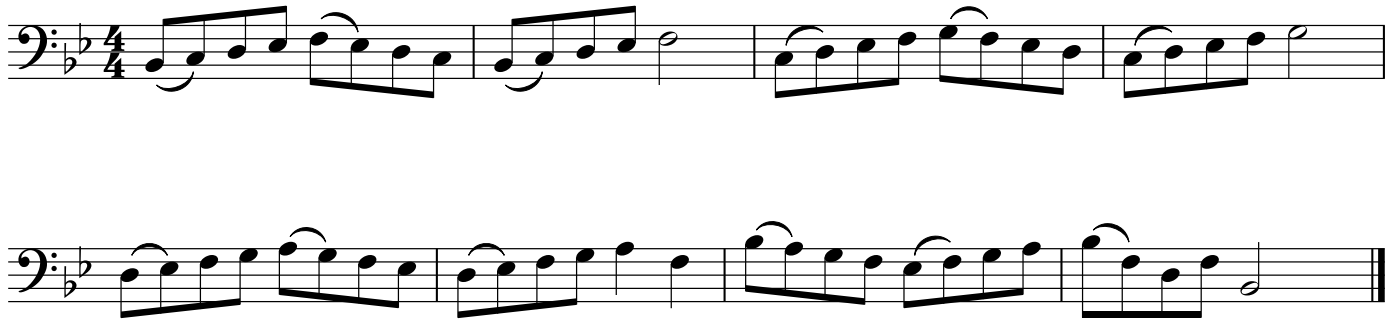
Concert Db, My _____



Knucklebusters-Volume 1

Tromb./Bar./Bsn.

Concert Bb, My _____



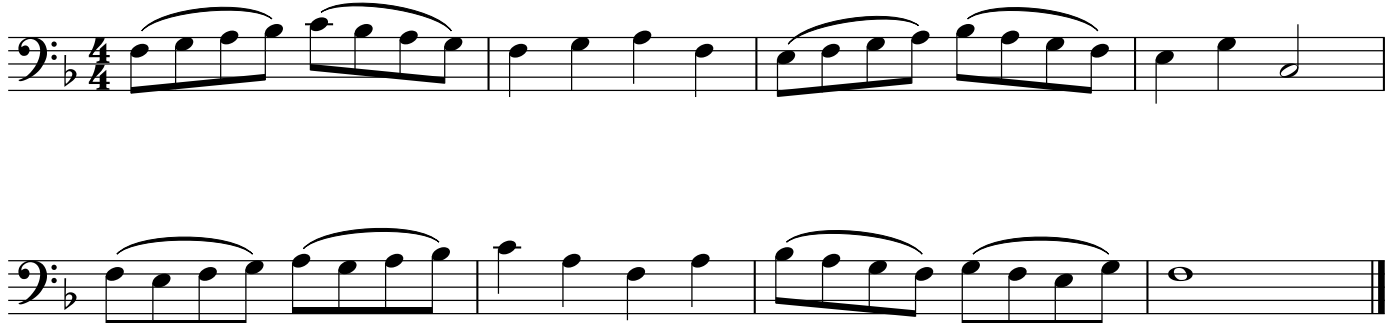
Two staves of musical notation for Concert Bb, My. The first staff contains four measures of music, and the second staff contains four measures. The key signature is two flats (Bb) and the time signature is 4/4. The music consists of eighth and sixteenth notes with various articulations.

Concert Eb, My _____



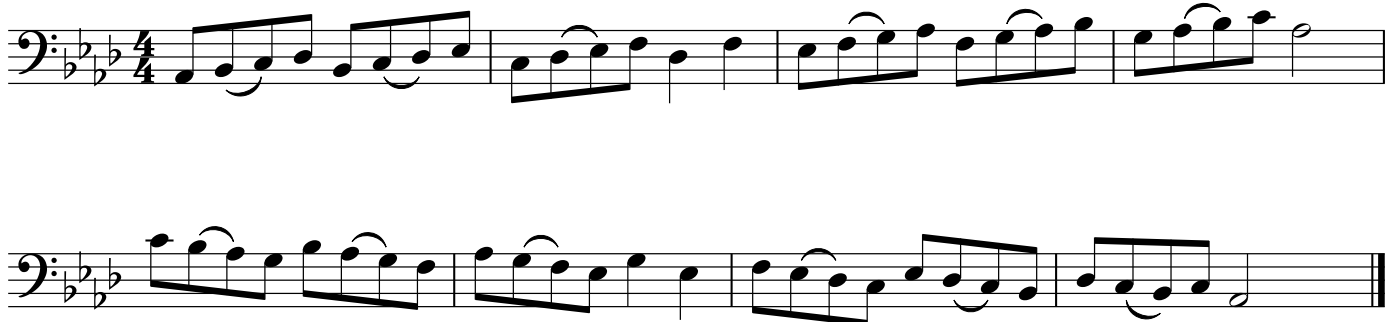
Two staves of musical notation for Concert Eb, My. The first staff contains four measures of music, and the second staff contains four measures. The key signature is three flats (Eb) and the time signature is 4/4. The music consists of eighth and sixteenth notes with various articulations.

Concert F, My _____



Two staves of musical notation for Concert F, My. The first staff contains four measures of music, and the second staff contains four measures. The key signature is one flat (F) and the time signature is 4/4. The music consists of eighth and sixteenth notes with various articulations.

Concert Ab, My _____



Two staves of musical notation for Concert Ab, My. The first staff contains four measures of music, and the second staff contains four measures. The key signature is three flats (Ab) and the time signature is 4/4. The music consists of eighth and sixteenth notes with various articulations.

Concert C, My _____

Two staves of musical notation in bass clef, 4/4 time, key of C major. The first staff contains four measures of music, ending with a whole note G. The second staff contains four measures of music, ending with a whole note G.

Concert G, My _____

Two staves of musical notation in bass clef, 4/4 time, key of G major. The first staff contains four measures of music, ending with a whole note G. The second staff contains four measures of music, ending with a whole note G. A dynamic marking 'p' is present above the second measure of the second staff.

Concert D, My _____

Two staves of musical notation in bass clef, 4/4 time, key of D major. The first staff contains four measures of music, ending with a whole note D. The second staff contains four measures of music, ending with a whole note D.

Concert Db, My _____

Two staves of musical notation in bass clef, 4/4 time, key of D minor. The first staff contains four measures of music, ending with a whole note D. The second staff contains four measures of music, ending with a whole note D.

Knucklebusters-Volume 1

Tuba

Concert Bb, My ____



Concert Eb, My ____



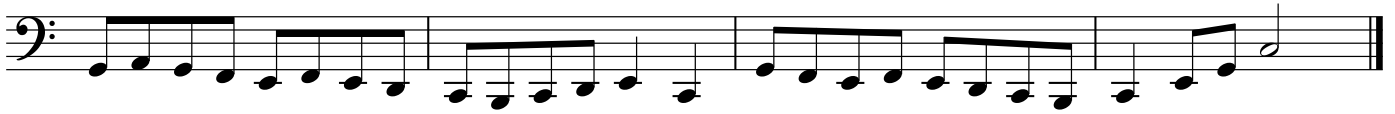
Concert F, My ____



Concert Ab, My ____



Concert C, My _____



Concert G, My _____



Concert D, My _____



Concert Db, My _____



Knucklebusters-Volume 1

Mallets

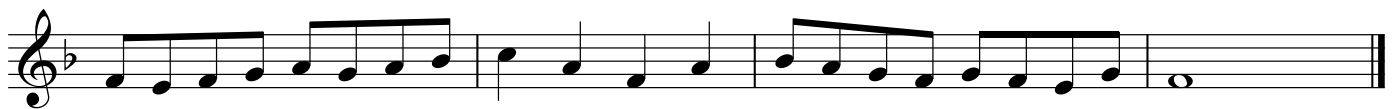
Concert Bb, My _____



Concert Eb, My _____



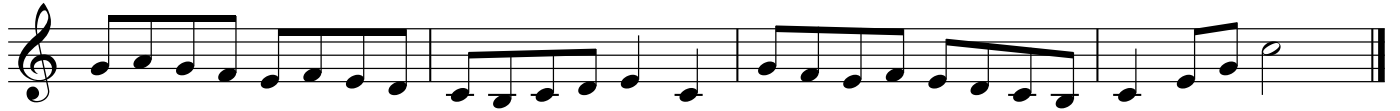
Concert F, My _____



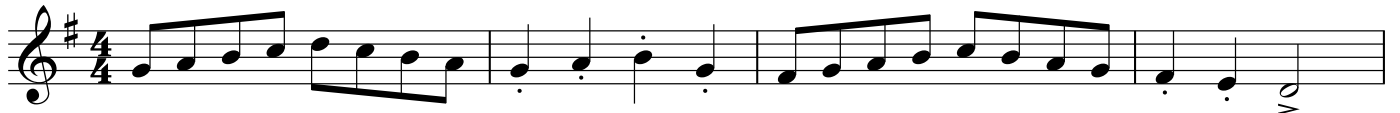
Concert Ab, My _____



Concert C, My _____



Concert G, My _____



Concert D, My _____



Concert Db, My _____

